

The image © Anna Thiele

Anna Thiele

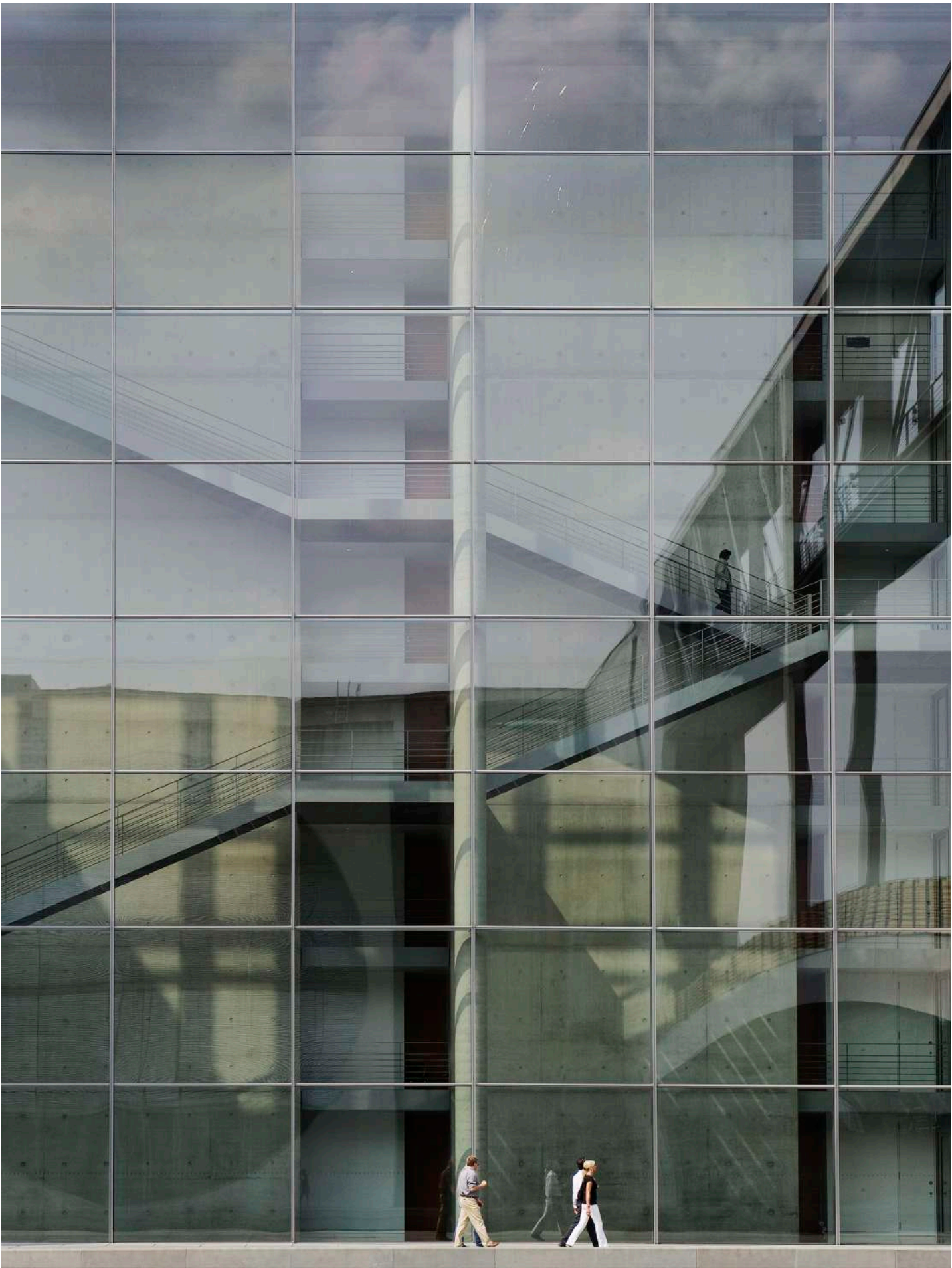
Germany

Anna Thiele, a distinguished Berlin-based artist, delves into the realms of transformation and the fragility of life through her evocative photography. Her work, characterized by a profound sense of concentration and calm, carries her distinct graphic signature and often resembles paused films, revealing metaphorical layers without providing definitive answers. Thiele’s journey in photography has been marked by significant achievements and accolades, solidifying her reputation in the art world.

Thiele’s interest in photography began at a young age, but it was her move to Berlin in the mid-1990s that truly ignited her passion. Witnessing the radical transformation of the city after the fall of the Berlin Wall, Thiele became fascinated by urban change and the interrelations between space and people. This fascination is evident in her project *Tempelhof. Metamorphosis*, which encapsulates a decade of observation at the vast disused airfield in Berlin that was handed over to the public in 2010. Published by DISTANZ in 2020, the book won the German Photobook Prize in Silver, showcasing the essence of Thiele’s meticulous work and dedication.

www.annathiele.de

REAL WORLD #7837,
BERLIN, 2011



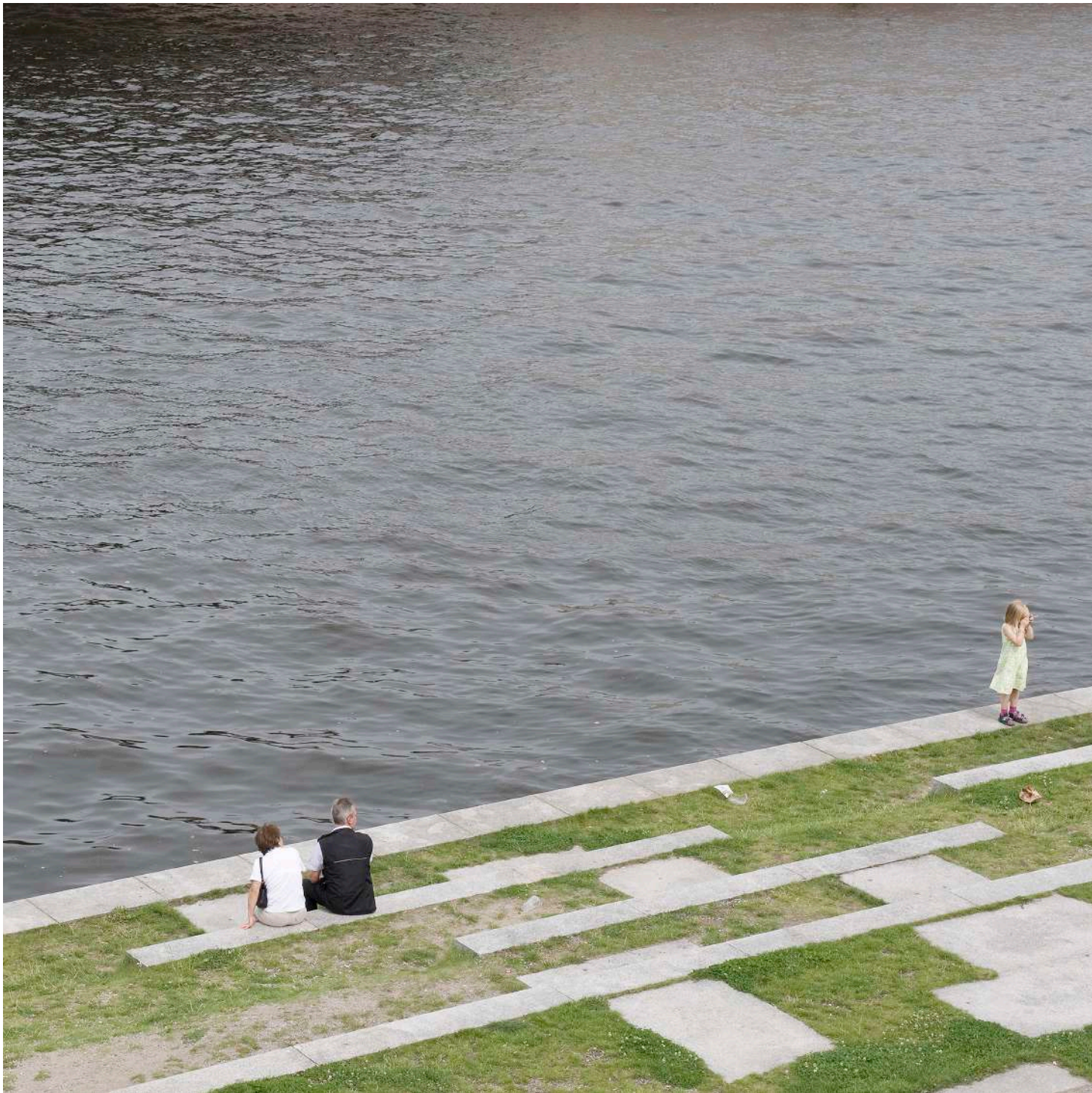


In 2023, Thiele was honoured with the 20th Julia Margaret Cameron Award for Overall Winner – Single Images Professional, a testament to her exceptional talent and contribution to the field. Her work continues to be celebrated and displayed in various exhibitions, offering viewers a profound exploration of life's constant transformations.

Thiele's approach to photography is deeply intuitive and rooted in reality. She explains, "I work exclusively on artistic projects, usually in an intuitive way based on reality. The images emerge first, and only later do I realize the true theme. This intuitive approach reflects my biography, especially the radical changes I experienced after being injured in an accident. We are all searching for our path and place in the world, yet much can be taken from us quickly, through war, pandemics, or personal tragedies. Photography helps me deal with life, allowing me to feel with my thoughts and think with my feelings."

Thiele's projects often draw from her personal experiences and the radical changes she has undergone. Her work on Tempelhof, for instance, mirrors her own journey of transformation and healing after a life-altering accident. This deep personal connection infuses her photographs with a poignant sense of introspection and resilience.

Her artistic journey was profoundly influenced by her time as a master's student under the renowned German photographer and professor Arno Fischer at the Ostkreuzschule für Fotografie in Berlin. Fischer's mentorship helped Thiele refine her vision and technique, shaping her into the accomplished artist she is today. Her work has been regularly exhibited, honoured, and included in both public and private collections, further establishing her as a significant figure in contemporary photography.



TIME OUT #9289,
BERLIN, 2011



TIME OUT #9245,
BERLIN, 2011

“Transitions are always challenging, but in most cases they also carry new freedom.”



Reflecting on Berlin's changes since the mid-1990s, Thiele recalls the city's radical transformation post-reunification. Spaces like Tempelhof became accessible, replacing what was once a "death strip" with vibrant public areas. Her earlier works, such as *Real World* and *Time Out*, also capture these monumental changes, showcasing a *Berlin. Relunched*. In these works, Thiele documents the juxtaposition of Berlin's political power structures with the everyday lives of its citizens, revealing the city's complex and evolving identity.

For Thiele, photography is not just a profession but a way to navigate life's challenges and uncertainties. "Photography is a way for me to deal with life, including the things that weigh you down. It enables me to feel with my thoughts and to think with my feelings," she says. This philosophy is evident in her associative projects, where she transforms everyday fragments into her own poetic spaces and narratives.

Thiele's dedication to her craft and her intuitive approach to capturing the essence of transformation make her work resonate deeply with audiences. Her photographs offer a glimpse into the ever-changing landscapes of urban spaces and human experiences, inviting viewers to reflect on their own journeys and the transient nature of life.

Tempelhof Airport, renowned for its pivotal role during the Berlin Airlift of 1948/49, was completely shut down in 2008. By 2010, the airfield had been opened to the public, creating a unique urban space in the heart of Berlin. Thiele was enchanted by this magical place and felt compelled to document its transformation and appropriation by people and nature. Over countless walks with her camera, Thiele captured the vastness of the space, the dynamic interplay between human activity and natural elements, and the ongoing debates about its future utilization amidst Berlin's severe housing shortage.



TEMPELHOF. METAMORPHOSIS #898, BERLIN, 2015
(‘NOTFALL-BEREITSTELLUNGSRaum’ =
EMERGENCY PREPAREDNESS AREA)

Her work on Tempelhof not only highlights the historical significance of the site but also emphasizes the power of public spaces in fostering community and freedom. In 2014, the majority of Berlin citizens voted in a referendum to preserve Tempelhof Field in its original state, a testament to its value as a symbol of freedom and open space.



TEMPELHOF.
METAMORPHOSIS #6626,
BERLIN, 2016



—
TEMPELHOF.
METAMORPHOSIS #4232,
BERLIN, 2010

As Thiele continues her creative journey, she remains committed to exploring new facets of photography, embracing the infinite possibilities it offers. Her work evolves with her life experiences, ensuring that her artistic path remains dynamic and ever-changing. “Transitions are always challenging, but they often bring new freedom,” Thiele asserts,

embodying the spirit of resilience and discovery that defines her work.

Anna Thiele’s remarkable body of work, her dedication to capturing the nuances of transformation, and her ability to convey profound narratives through her photographs make her a true luminary in the world of contemporary art.

—
TEMPELHOF. METAMORPHOSIS
#4704, BERLIN, 2010

—
TEMPELHOF. METAMORPHOSIS
#6, BERLIN, 2011



TEMPELHOF.
METAMORPHOSIS #3579,
BERLIN, 2010



Pages 160 – 175 from:

FotoNostrum Magazine
Issue No. 38
Published 21 June 2024

With a special feature presenting the winners of the 20th Julia Margaret Cameron Award for Women Photographers, juried in 2023 under the chairmanship of Elisabeth Avedon and exhibited at FotoNostrum Gallery, Barcelona, in April 2024

www.fotonostrummag.com

